



Evolve 2025 - New Chapter Leaders



Presented by



CLC Chair
Adam
Rineer, CPCE, CMP



National Vice President
Lyn
Gleasure, CPCE, CMP



CLC Mentor
Alli
Prato, CPCE

Invaluable Resources

- ❑ Evolve Workbook
- ❑ National Website Deepdive
- ❑ NACE Essentials
- ❑ Chapter Requirements

NACE.NET

Splash Page

- Banner
- Featured News
- Upcoming Events
- Latest Blog Posts
- National Partners
- Connect
- Navigate

Drop Down: Why NACE

- Become a Member
- Savings & Discounts
- Meet our Partners
- Find a Chapter
- Refer a Friend
- Chapter Leadership Resources
 - 2024 Membership Campaign

NACE.NET

Drop Down: Connect and Learn

- Events and Learning - Evolve, Experience, Online
 - Chapter Leader Bootcamp
 - Secretary 101, Treasurer 101
- NACE Blog - stay informed.
- Get Certified - All things CPCE!
- Career Center - Post Resume, Apply for Jobs
- NACE One Awards - Everything you need!
- Volunteer - take your involvement to the next level.
- NACE Communications - EXPRESS & CHAPTER LEADER
- Resource Library - searchable topics.
- Member Directory - our community.

NACE.NET

NACE EXPRESS



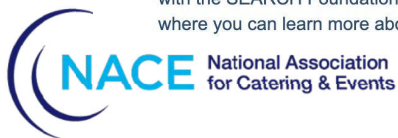
A Message from the 2025 National President of NACE

Our hearts go out to all those affected by the devastating fires in Los Angeles County. We know many have lost their homes and businesses, and the impact is deeply felt by the community.

If you are looking for ways to help or are in need of assistance, we encourage you to reach out to the following:

SEARCH Foundation

SEARCH provides critical financial assistance to event industry professionals facing crisis situations. This issue of NACE Express includes an interview BizBash conducted with the SEARCH Foundation's chair, Kate Patay, CPCE, where you can learn more about SEARCH's relief and



CHAPTER LEADERS NEWS



And That's a Wrap on the Fall 2024 Membership Campaign!

Thank you to every single one of you who helped drive this campaign to grow our vibrant NACE community! This year, we saw incredible growth across the board and witnessed the heart of the campaign's message resonate in every chapter: **Connect, Build, Thrive.**

Here's a look at the final results:

🎉 **Congratulations to Ventura NACE for leading the pack with 13 new members!**

👏 A special shoutout to **Hampton Roads, Las Vegas, Greater Seattle, and Triangle NACE** for your impressive growth as well.

NACE.NET

Drop Down: Partner with NACE

- Partnerships
- Advertise

Drop Down: About NACE

- National Board
- National Committees
- Code of Ethics
- Past Presidents
- Contact Us

National Board



President
Michelle
Stansfield,
CPCE



President-Elect
Jill Vidal-
Raines,
CPCE



Vice President
Lyn Gleasure,
CPCE, CMP



Secretary/Treasurer
Dana Kadwell,
CPCE



Immediate Past
President
Michelle Dunnick,
CPCE MBA



CLC Director
Stephanie
Olivares, CPCE



At Large
Director
Kelly
Dalisa,
CPCE



At Large
Director
Robin
Denny,
CPCE, MBA
CERP



At Large
Director
Gil
Hall,
CPCE, CMP

National Committees

- Black Caucus
- Chapter Leadership Council (CLC)
- Conference Advisory
- Diversity, Equity, Inclusion (DEI)
- Member Recognition
- Membership
- Nominations & Elections
- Professional Development

Chapter Leaders Council (CLC)



CLC Director
Stephanie
Olivares, CPCE



CLC Chair
Adam
Rineer,
CPCE



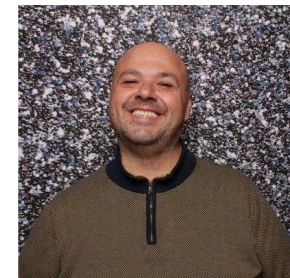
CLC Mentor
Alli
Prato CPCE



CLC Mentor
Jennifer
Burns



CLC Mentor
Richard
Portney, CPCE



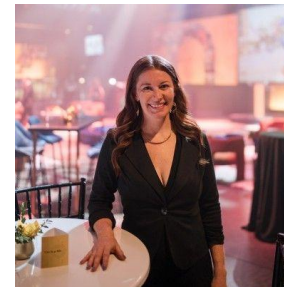
CLC Mentor
Tom
Kokinakos



CLC Mentor
Andy
Bomberger,
CPCE



CLC Mentor
Renee Poole,
CPCE



CLC Mentor
Sarah
Davidson,
CPCE

Chapter Leadership Council (CLC)

- ❑ Chapter Mentor Assignments
- ❑ Monthly Chapter Check-Ins, Reporting Templates
- ❑ Board Health, Financial, Fundraising, Programming
- ❑ Answer Questions, Offer Direction & Feedback, Brainstorm
- ❑ Direct support to Chapter President, include the Board as needed
- ❑ Program Repository
- ❑ Required!

National Office Team



**Executive
Director
Lawrence
Leonard**



**Deputy
Executive
Director,
Anne Harper,
CAE**



**Marketing &
Comms Manager
Anastacia
Barbosa-McBride**



**Meeting Manager
Jazmin
Goines**



**Meeting Manager
Julie
Elfand, CMP**



**National
Business
Manager
Mike
Bauer**



**National
Membership
Services & CPCE
Manager
Zofia
Lajer-Burcharth**

One Stop Support

Chapters@nace.net

Got exciting news or industry contributions? We want to hear from you!

Share your catering and events industry articles, stories, photos, and insights for the next NACE Express newsletter.

Email us at marketing@nace.net today!



Store



Search

All Products

CPCE Study Tools

NACE Merch

Your cart is empty.

Home

Order Status

Help Center

[Home](#) > All Products

All Products



NACE Professional Reference Guide for the Catering and Events Industry, 2nd Edition

Revised: July 12, 2024
Pages: 165

Price: **\$99.00** each Quantity:

[View Details](#)

[Add To Cart](#)



Distressed 3D Logo Trucker Hat

Available Items: 10

Price: **\$24.49** each Quantity:

Discounts on 2 or more

[View Details](#)

[Add To Cart](#)



Insulated Wine Flutes

Available Items: 32

Price: **\$22.49** each Quantity:

Discounts on 2 or more

[View Details](#)

[Add To Cart](#)



OUR MISSION

The mission of the Foundation of NACE is to support the catering and events industry through education and investments that support NACE members and chapters. We do this through innovative, transformative programs that elevate and advance our collective community. Incorporated in 1985, the Foundation is a 501(c)3 charitable organization.





WHAT WE DO

SCHOLARSHIPS

We provide scholarships which assist future and current professionals advance their career in the catering and events industry, by providing funds that support tuition, leadership training and professional development. Four scholarships are awarded annually, Vince DeFinis, Jo.C Demid and (2) Foundation of NACE.

SPEAKER GRANTS

We provide chapters on a one-time annual basis of a \$500 grant to fund chapter educational programming.

HOW CAN YOU CONTRIBUTE?

DONATE

- Become a corporate sponsor, starting at \$1,000 a year.
- Make an individual donation of as little as \$20 a month.
- Donate as a chapter during the Parade of Giving at Experience.

VOLUNTEER

Join a committee, for more information contact Kevin Dennis, CPCE at foundation@foundationofnace.org.

**GIVE TODAY BY
SCANNING THE QR CODE
OR VISIT OUR WEBSITE.**



SPREAD THE WORD

Share the great news of what FoN does to your industry peers, ask them to follow us on social media, or join our database to receive more information.

STAY CONNECTED



www.foundationofnace.org



foundation@nace.net



[@nacefoundation](https://www.instagram.com/nacefoundation)



[facebook.com/FoundationofNACE](https://www.facebook.com/FoundationofNACE)



PARADE OF GIVING

- A long-time tradition held during town hall meeting while at Experience Conference and being acknowledged amongst peers for their generous contribution.
- A way for Chapters to giveback to the Foundation of NACE for their support throughout the year.
 - Many chapters contribute funds out of profits from their local fundraising efforts.
- Regardless of the amount you decide to donate, all funds will be used towards FoN programming.

NACE Essentials

- ❑ Chapter Board Officer Transition Plan
- ❑ Board of Directors Confidentiality Statement, Code of Interest
- ❑ Quarterly Reporting Checklist
- ❑ Board of Directors Agenda
- ❑ Odds & Ends
 - ❑ Chapter Leaders Job Descriptions
 - ❑ Recruitment, Succession
 - ❑ Micro Responsibilities. Length of Time
 - ❑ Social Media
 - ❑ Follow other chapters
 - ❑ Glue Up

Chapter Requirements

- Educational Program requirement, quarterly reporting
- Board Meeting / Board Retreat requirement, quarterly reporting
- Chapter Elections
- Chapter Roster
- Tax Filing
- Quarterly Reports - January 31, April 30, July 30, October 31
- Chapter Watch 1 & 2 - February & August
- REPORTING = REBATES
- Evolve & Experience attendance
- Glue Up migration

Wrapping Up

- ❑ Your Personal ROI
- ❑ Balance Life & Chapter Responsibilities
- ❑ Keys to Success
- ❑ Questions