



2024 NACE Evolve Conference



Invaluable Resources

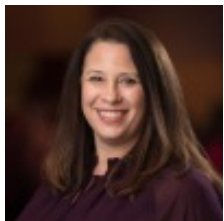
- Chapter Resource Guide
- National Board
- Chapter Leadership Council (CLC)
- National Staff
- National Website <https://www.nace.net/>
 - NACE App
- NACE Essentials

2024 National Board

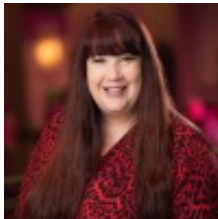
President
Michelle Dunnick,
CPCE, MBA



President Elect
Michelle Stansfield,
CPCE



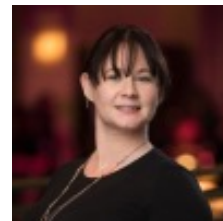
**Immediate Past
President**
Amber Allen, CPCE



Vice President
**Jill Vidal-
Raines, CPCE**



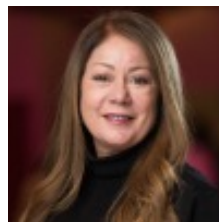
Secretary/Treasurer
Sarah James,
CPCE



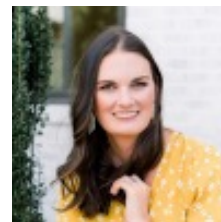
At-Large Director
Lyn Gleasure,
CPCE, CMP



At-Large Director
Gill Hall,
CPCE, CMP



At-Large Director
Kelly Dalisa,
CPCE



**Chapter Leaders Council
Director**
Dana Kadwell, CPCE

Chapter Leaders Council (CLC)

- Dana Kadwell, CPCE – Chapter Leaders Council Director / National Board role
- Stephanie Olivares, CPCE – Chapter Leaders Council Chair / Non-National Board role
- Chapter Mentors
- Monthly Chapter Check-Ins, Reporting Templates
 - Board Health
 - Financial
 - Programing
- Answer Questions, Offer Direction & Feedback, Brainstorm
- Direct support to Chapter President, include the Board as needed



National Staff

Executive Director
Lawrence Leonard



**Programs &
Operations Director**
Anne Harper, CAE



**Programs
Coordinator**
Crystal Irwin, PACE



**Marketing &
Communications
Manager**
Charmayne Branch



**Operations
Coordinator (part
time/phasing out)**
Sylvia Buell



National Staff Support

- Administrative Support
 - NACE National Staff = Support
 - Branding Guidelines
- Leadership Development
 - Develop Chapter Resources
 - Chapter Leadership Committee
 - Evolve Leadership Conference – Annual
 - Experience Conference – Annual
 - Online Learning
- Membership Development and Recognition
 - Membership Campaigns - Fall in Love, Renew For Two
 - Rosters, New Members
 - ONE Awards, Chapter Awards

NACE.NET – Why NACE

Splash Page

- Membership Directory
- Member Gift Guide
- Resource Library
- CPCE Certification (Certified Professional Catering and Events)
- On-Line Courses
- ONE Awards
- Employer Center
- Career Center
- Discounts and Special Offers

Dive Deeper

- Become A Member
- Savings and Discounts
- Meeting our Partners
- Find A Chapter
- Refer a Friend
- Chapter Leader Resources
 - – www.nace.net/chapters-leaders-resources (must be logged in)

NACE.NET – Why NACE

Chapter Leader Resources

– www.nace.net/chapters-leaders-resources (must be logged in)

- Chapter Leaders Bootcamp Online Course
- Chapter Resources Google Drive
- Diversity and Inclusion
- Finance and Taxes
- Governance
- Leadership Templates
- Local Advocacy Resources
- Tutorials and Webinars
- Membership, Speaker Series, Student Chapters and more!

NACE.NET – Connect & Learn

- Events and Learning - Evolve, Experience, Online
- NACE Blog
- Get Certified
- Career Center
- NACE One Awards
- Volunteer
- NACE Communications – NACE Express, NACE Chapter Leaders News
 - Notification Preferences, My Profile
- Resource Library
- Member Directory

NACE.NET – Partners, About, Foundation

- Partners with NACE
 - National Partnerships
 - Advertisement Opportunities
- About NACE
 - National Board, National Committees, National Staff, Past Presidents
 - Code of Conduct
- Foundation of NACE
 - Dana Blaugrund, CPCE, CWC
President



Foundation of NACE



The mission of the Foundation of NACE is to support the catering and events industry through education and investments that support NACE members and chapters. We do this through innovative, transformative programs that elevate our collective community. Incorporated in 1985, the Foundation is a 501(c)3 charitable organization.

<https://www.foundationofnace.org/>

#NACEEVOLVE24

National Standing Committees

- Advocacy
- Black Caucus
- Chapter Leaders Council (CLC)
- Conference Advisory Committee
- Diversity, Equity, and Inclusion (DEI)
- Member Recognition
- Membership
- Nominations and Elections
- Professional Development

NACE Essentials

- Chapter Board Officer Transition Plan
- Board of Directors Confidentiality Statement & Conflict of Interest
- Quarterly Reporting Checklist
- Board of Directors Agenda
- Other Odds & Ends
 - Chapter Leader Job Descriptions
 - Recruitment, Succession
 - Micro Responsibilities, Length of Terms
 - Other Resources
 - Social Media

Chapter Requirements

- Hold at least 6 program meetings a year – board minutes, quarterly reporting
- Hold at least 10 board meetings a year – quarterly reporting
- Send a representative to Evolve
- Send at least one representative to Experience and attend the CLC Meeting, participation in the election process
- Submit Chapter Watch
- Submit Quarterly Reports
- Chapter Elections
- Bank Statements, quarterly reporting
- Tax Filing

Reporting = Rebates

- Chapter Quarterly Reports
 - January 31
 - April 30
 - July 31
 - October 31
- Chapter Watch – February & August
- Chapter Roster
- Chapter Rebates

NOW LET'S TALK ABOUT YOU!

- Volunteer vs. Voluntold
- Your personal ROI
- Balance life and chapter responsibilities
- Keys to success
- Questions ?